



# **JMM5000 Driver Installation Instructions for Windows**

Revision A.0

March 2016

Revision	Date	Comment
A.0	03/17/2016	Initial release

**FOR TECHNICAL SUPPORT  
PLEASE CONTACT:**

**[support@diamondsystems.com](mailto:support@diamondsystems.com)**

© Copyright 2015  
Diamond Systems Corporation  
555 Ellis Street  
Mountain View, CA 94043 USA  
Tel 1-650-810-2500  
Fax 1-650-810-2525  
**[www.diamondsystems.com](http://www.diamondsystems.com)**

## CONTENTS

1. Introduction .....	3
2. Install JMMM5000 Driver Software .....	3
3. Uninstall JMMM5000 Driver Software .....	7

## 1. INTRODUCTION

This document describes the steps to run the JMMM5000 Driver Installation for Windows 7 32-bit OS.

## 2. INSTALL JMM5000 DRIVER SOFTWARE

- Click on the “JMM5000DriverInstaller.exe” to proceed to Welcome wizard screen (as shown in Figure 1).



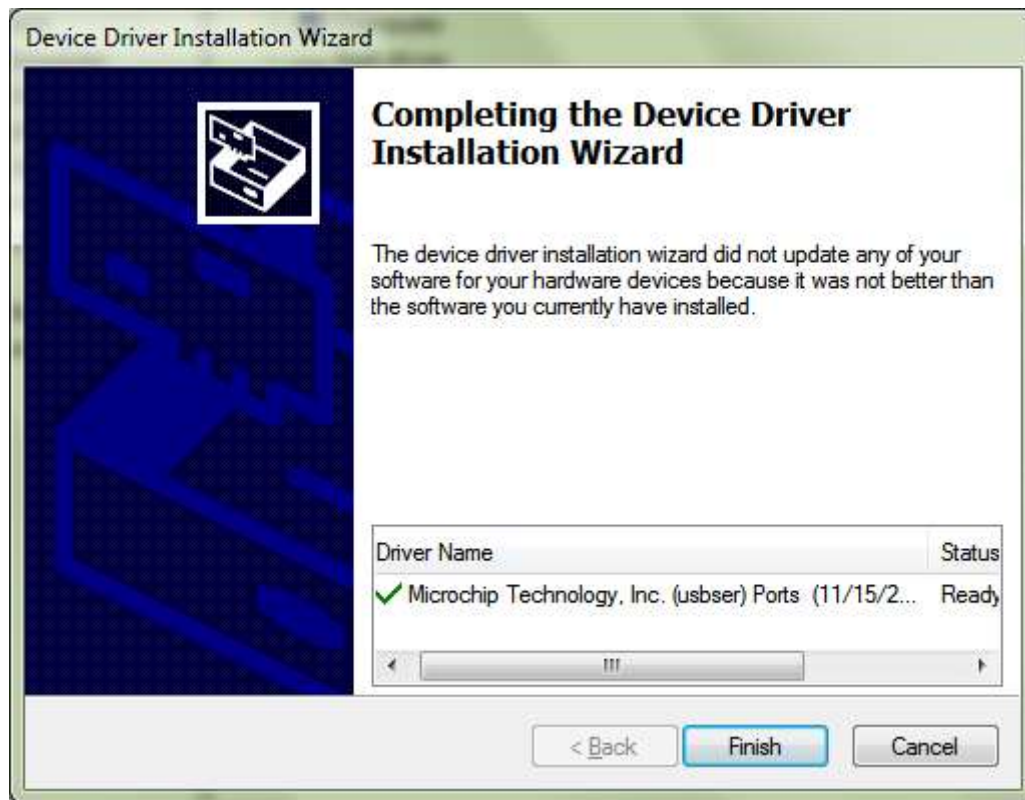
**Figure 1: JMMM5000 Welcome Wizard**

- Read and select the “Always trust software from Microchip Technology Inc.” and click on “Install” (shown in Figure 2) to proceed the installation process.



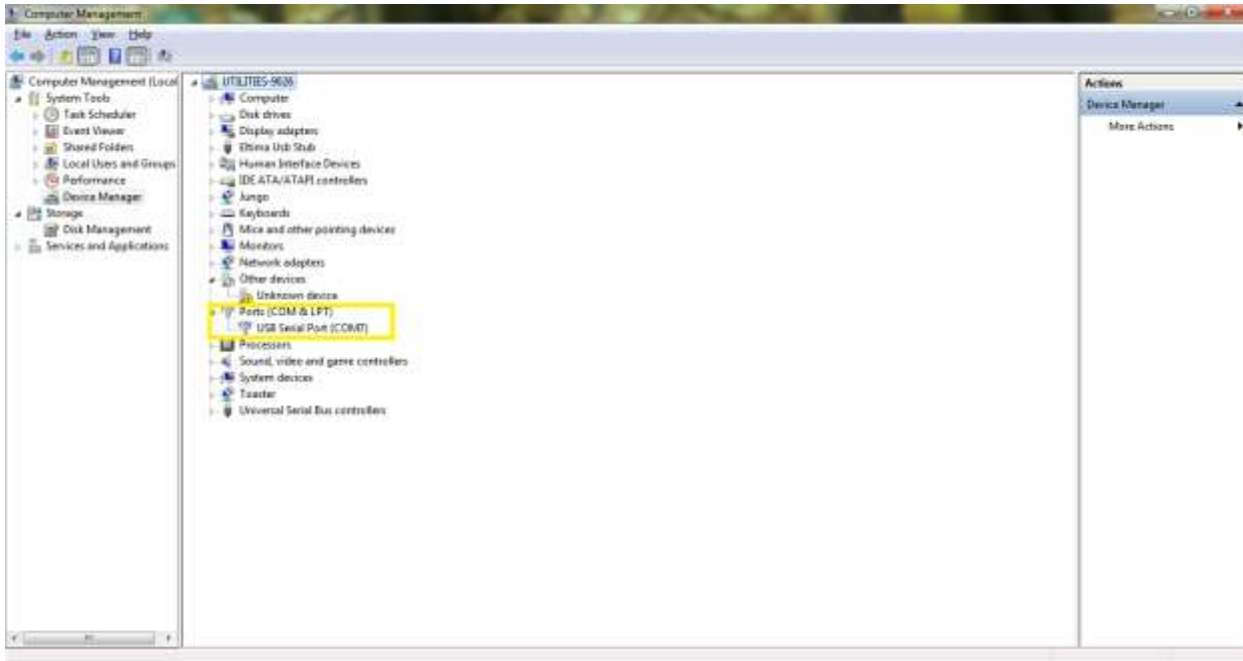
**Figure 2: Install the driver software**

- Installation of the driver is displayed (as shown in Figure 3).



**Figure 3: Device Driver Installation Completion Wizard**

- The JMMM5000 driver gets installed and device is shown as “USB Serial Port” under “Ports” class in the device manager (as shown in figure 4 ).



**Figure 4: Device Manager**

### 3. UNINSTALLING JMMM5000 DRIVER SOFTWARE

- Open the Device Manager.
- The JMMM5000 driver installed is shown as “USB Serial Port” under “Ports” class in the device manager (as shown in figure 4 ).
- Right Click on it and select Uninstall option, the window as shown in the figure 6 pops up.
- Check the “Delete the driver software for the device” option.
- Press OK.



**Figure 5: Uninstall the JMMM5000 Driver**