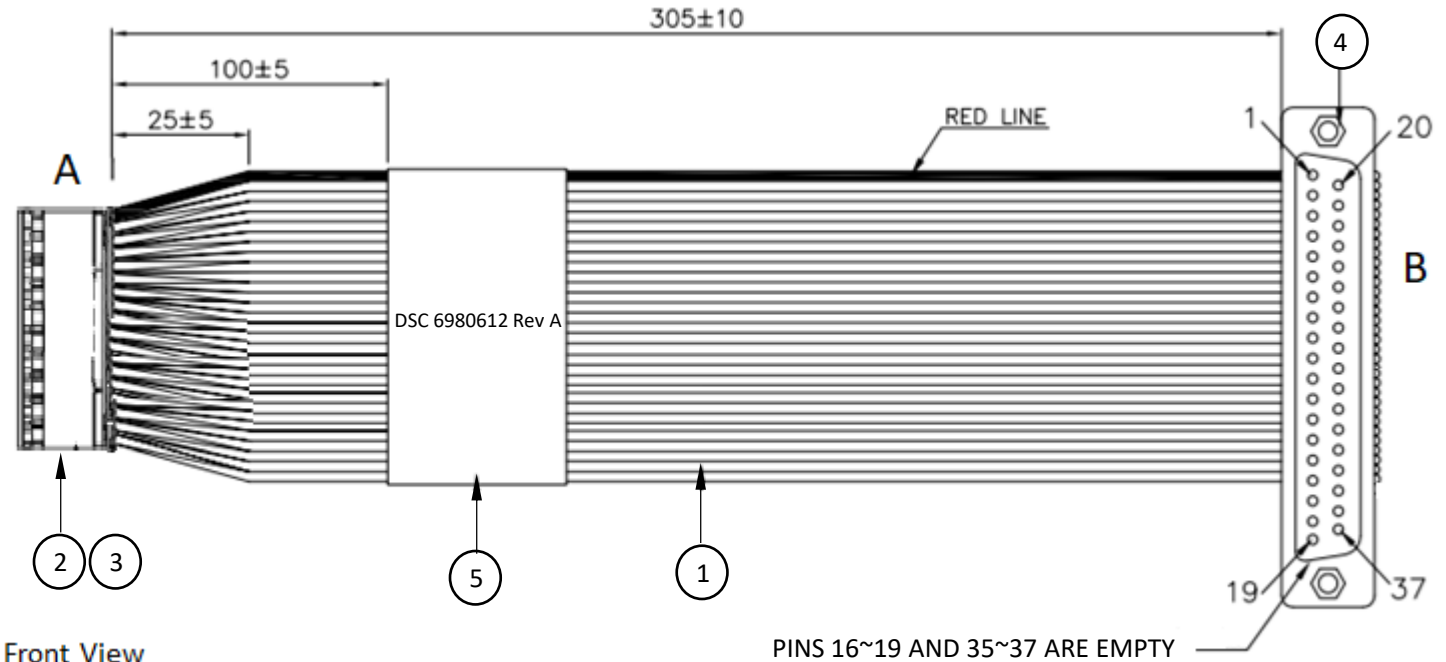
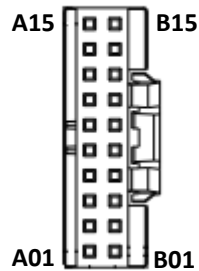


WIRING CHART

A	COLOR	B
A01	RED	1
B01	GREY	20
A02	GREY	2
B02	GREY	21
A03	GREY	3
B03	GREY	22
A04	GREY	4
B04	GREY	23
A05	GREY	5
B05	GREY	24
A06	GREY	6
B06	GREY	25
A07	GREY	7
B07	GREY	26
A08	GREY	8
B08	GREY	27
A09	GREY	9
B09	GREY	28
A10	GREY	10
B10	GREY	29
A11	GREY	11
B11	GREY	30
A12	GREY	12
B12	GREY	31
A13	GREY	13
B13	GREY	32
A14	GREY	14
B14	GREY	33
A15	GREY	15
B15	GREY	34

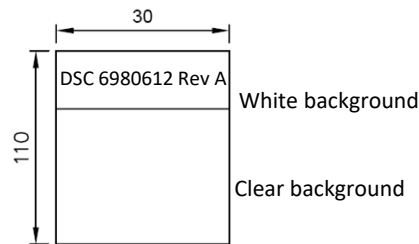


Front View



Label Details

Similar design may be substituted



No	ITEM	QTY	DESCRIPTION	UL / CSA No
1	FLAT CABLE	1pcs	UL2651#28X30C, PITCH:1.27MM, JACKET:PVC, COLOR:GRAY	E209329
2	30P HOUSING	1pcs	CONN HOUSING 30POS 2MM W/KEY P/N: 10073599-030LF	
3	TERMINAL	30pcs	CONN TERM FEMALE 26-30AWG CRIM P/N: 77138-001LF	
4	D-SUB+SCREWS	1 SET	IDC D-SUB 37 FEMALE W/SR, COLOR:BLACK, WITH 4#40 HEX SCREWLOCK 4.75X11.8MM	
5	LABEL	1pcs	TRANSPARENT POLYESTER SEE DETAIL "A"	

NOTES:

1. ALL DIMENSIONS ARE "MM".
2. THE PRODUCT MUST BE COMPLY WITH THE DIRECTIVE OF ROHS.
3. PACKAGE: 1PC/BAG.

Diamond Systems Corp.
Cable no. 6980612 Rev A
Analog I/O