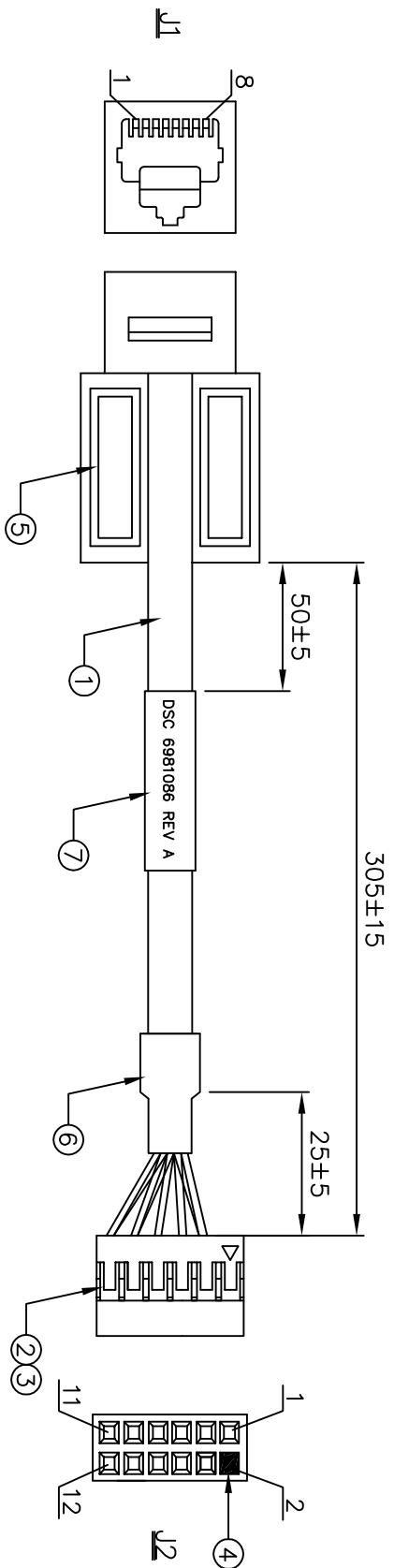


REV.	ECO. NO.	APPD
A	REL.	LARRY 12/15/20

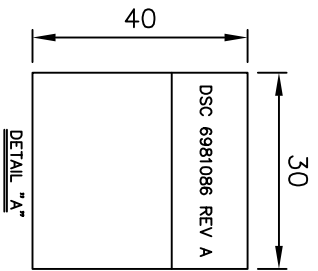


WIRE COLOR	WIRE CONNECTION TABLE
8 BROWN	10 TWIST PAIR
7 BROWN/WHITE	12 TWIST PAIR
5 BLUE(or BLACK)/WHITE	4 TWIST PAIR
4 BLUE(or BLACK)	6 TWIST PAIR
6 GREEN	3 TWIST PAIR
3 GREEN/WHITE	7 TWIST PAIR
2 ORANGE	9 TWIST PAIR
1 ORANGE/WHITE	11 TWIST PAIR

● WIRE COLOR JUST FOR REFERENCE ONLY

NOTES:

1. ALL DIMENSIONS ARE "MM".
2. ANY OPEN, MISWIRING, SHORT & INTERMITTENT ARE NOT PERMITTED.
3. CONDUCTION RESISTANCE:20 MAX
4. THE PRODUCT MUST BE COMPLY WITH THE DIRECTIVE OF ROHS.
5. PACKAGE:1PC/BAG.



No.	ITEM	Q'TY	DESCRIPTION
7	LABEL	1PC	W=30.0MM, L=40.0MM, CONTENT SEE "A"
6	H.S. TUBE	1PC	HEAT SHRINK TUBE 6#*15MM COLOR BLACK
5	RJ 45 JACK	1SETS	KEYSTONE RJ45 8P8C JACK P/N EKT1B-D10 OR EQUIVALENT
4	KEY 2.54MM	1PCS	2.54MM KEY BLACK
3	CRIMP TERMINAL	8PCS	CRIMP CONTACT JMT P/N A2541T3P-00 OR EQUIVALENT
2	12P HOUSING	1PC	2.54MM 2X6P BLACK JMT P/N A2541H02-2*6P OR EQUIVALENT
1	CABLE	1PC	CAT 5E UTP*4PAIRS JACKET:PVC, COLOR: GRAY

X:±	.xxx:±	X':±	.xx':±
.X:±0.5	.xxx:±	X':±	.xx':±



PART NO.(INTENDED USE)	TITLE:CABLE, ETHERNET
6981086 REV A	RJ45 JACK PNL MT TO 12 PIN CONN HOUSING
APPD: LARRY 12/15/20	DWG NO.: GL-GH850
CHKD: WUZUJIAN 12/15/20	SCALE SHEET REV.
DR: AARON 12/15/20	NONE 1/1 A

