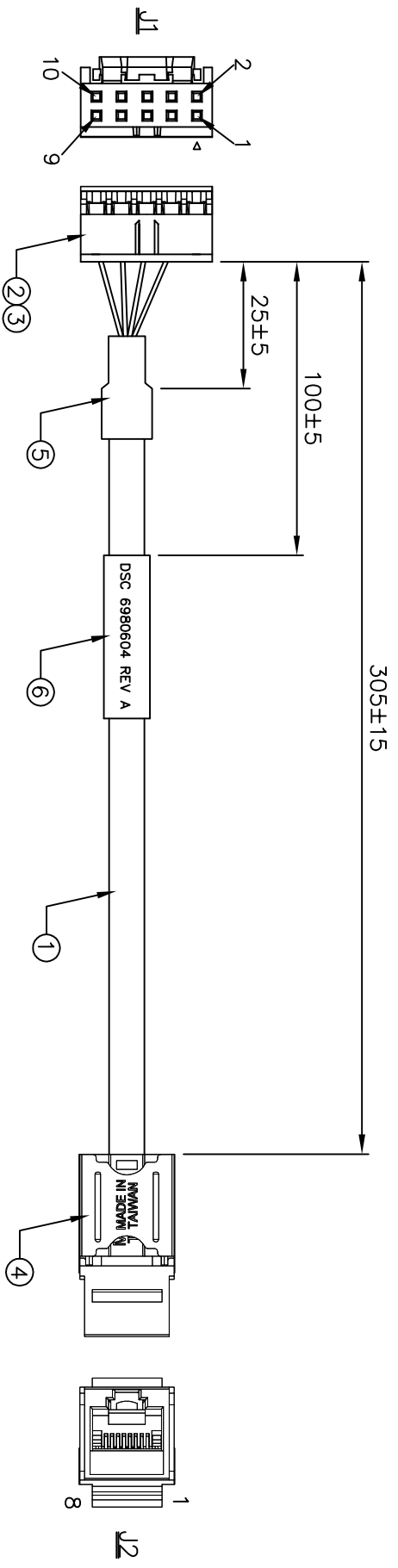
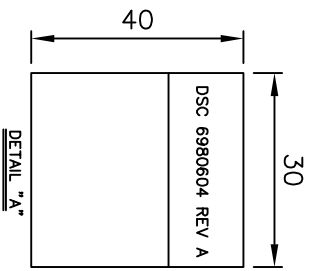


REV.	ECO.	NO.	APPD
A	REL.	LARRY	02/06/20



10	BROWN	TWIST PAIR	8
9	BROWN/WHITE	TWIST PAIR	7
8	BLUE(or BLACK)	TWIST PAIR	5
7	BLUE(or BLACK)/WHITE	TWIST PAIR	4
6	GREEN	TWIST PAIR	6
5	GREEN/WHITE	TWIST PAIR	3
4	ORANGE	TWIST PAIR	2
3	ORANGE/WHITE	TWIST PAIR	1
WIRE COLOR		J2	
WIRE CONNECTION TABLE		J1	

● WIRE COLOR JUST FOR REFERENCE ONLY



No.	ITEM	Q'TY	DESCRIPTION
6	LABEL	1PC	W=30.0MM, L=40.0MM, CONTENT SEE "A"
5	H.S. TUBE	1PC	HEAT SHRINK TUBE 6φ*15MM COLOR BLACK
4	RJ 45 JACK	1SETS	KEYSTONE RJ45 8P8C JACK P/N EKT1N-U1WH-OR EQ
3	CRIMP TERMINAL	10PCS	CRIMP CONTACT FCI P/N 77138-001LF
2	10P HOUSING	1PC	2MM 2X5P BLACK FCI P/N 10073599-010LF
1	CABLE	1PC	CAT 5E UTP*4PAIRS JACKET:PVC, COLOR:GRAY

- NOTES:
1. ALL DIMENSIONS ARE "MM".
 2. ANY OPEN, MISWIRING, SHORT & INTERMITTENT ARE NOT PERMITTED.
 3. CONDUCTION RESISTANCE:2Ω MAX
 4. THE PRODUCT MUST BE COMPLY WITH THE DIRECTIVE OF ROHS.
 5. PACKAGE: 1PC/BAG.



X:±	.XX:±	X':±	.XX':±
X:±0.5	XXX:±	X':±	XXX':±
PART NO.(INTENDED USE) 6980604 REV A			
TITLE: CABLE, FCI 2MM 10P TO RJ PANEL MOUNT			
APPD: LARRY 02/06/20		DWG NO.: GL-GH838	
CHKD: WUZULIAN 02/06/20		SCALE SHEET REV.	
DR: AARON 02/06/20		NONE 1/1	



1 2 3 4 5 6 7 8 02011B